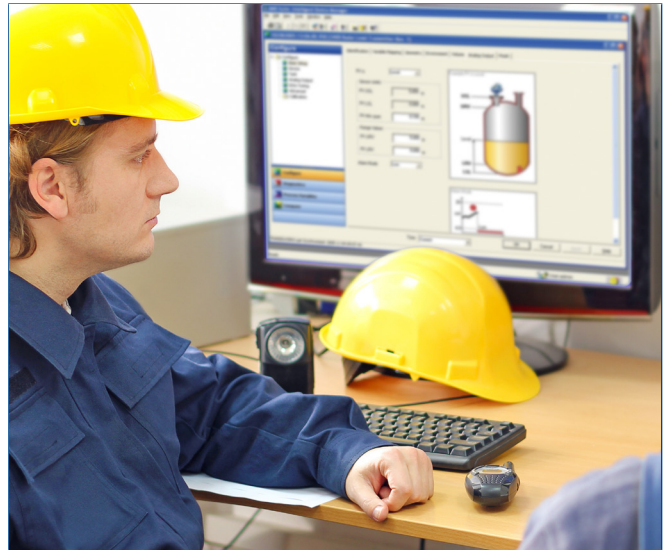


# AMS Device Manager

- Fully implement predictive diagnostics and resolve device issues remotely and efficiently to improve plant availability and reduce maintenance costs
- Configure and calibrate all your online and offline devices using one software application
- Simplify device management using Field Device Integration (FDI) packages increasing productivity of maintenance personnel
- View device health, calibration status, and project tracking from anywhere with browser-based AMS Device View
- Automatically synchronize field changes from AMS Trex via USB or WiFi
- Securely publish device data for advanced analytics and centralized monitoring and optimization programs



*AMS Device Manager provides predictive diagnostics, simplifies field device configuration and calibration, and automatically documents your assets.*

## Predictive Maintenance for Instruments and Valves

AMS Device Manager reduces commissioning and maintenance expenses while improving reliability and product quality. In process industries where lost production from slower startups and longer downtimes can cause millions of dollars in lost revenue, plant personnel need accurate, real-time information.

AMS Device Manager saves you time and money by delivering valuable diagnostic information already contained within your plant in a clear, meaningful way. This means you can act before the process is affected by poor quality, or worse, a costly shutdown.



## Access to Full Device Functionality with Field Device Integration (FDI)

Field Device Integration (FDI) is designed to meet plant needs including ease of device maintenance, investment protection, and security.

FDI device packages have all of the device information in one place providing a more efficient way to set up and access advanced diagnostics of complex devices such as radar level transmitters.

FDI device packages include a device description, an optional User Interface Plug-in (UIP) providing a rich graphical user interface for more sophisticated device applications, and attachments which can be any device documentation such as manuals, certificates or protocol specific files.

FDI device packages also provide increased security through digitally signed certificates ensuring authenticity and integrity of the packages.

Alert Tag	Count	Time	Severity	Description	Device Group	Plant Location	Station	Manufacturer	Device Type	Device Revision	Protocol	Acknowledged
VT131	32	2/23/2018 12:53:12	Warning	Smart I Bias Pa...	Rig Unit Equip.C.	AmoParService	CS3	CSI 8420	4	HART	X	
VT131	32	2/23/2018 12:53:12	Warning	Smart I Bias Pa...	Rig Unit Equip.C.	AmoParService	CS3	CSI 8420	4	HART	X	
TT323W	4	2/23/2018 12:53:12	Warning	WV Wire Drop	Rig Unit Equip.C.	AmoParService	Roomount	646 Wireless Tempe...	1	HART		
TT323W	249	2/23/2018 12:53:12	Warning	Supply Voltage F...	Rig Unit Equip.C.	AmoParService	Roomount	646 Wireless Tempe...	1	HART		
TT323W	249	2/23/2018 12:53:12	Warning	WV Wire Drop	Rig Unit Equip.C.	AmoParService	Roomount	646 Wireless Tempe...	1	HART		
TT323W	248	2/23/2018 12:53:12	Warning	Fold Device mal...	Rig Unit Equip.C.	AmoParService	Roomount	646 Wireless Tempe...	1	HART		
TT323W	248	2/23/2018 12:53:12	Warning	Critical Power Fal...	Rig Unit Equip.C.	AmoParService	Roomount	646 Wireless Tempe...	1	HART		
TT323W	18	2/23/2018 12:53:12	Warning	AmoPar Wire...	AmoParService	Roomount	2144		4	HART		
FAM GW1	3	2/23/2018 15:20:26	Normal	Fold Device Prev...	Rig Unit Equip.C.	AmoParService	Roomount	Smart Wireless Gate...	5	HART		
FAM GW1	23	2/23/2018 15:20:26	Normal	Single Network J...	Rig Unit Equip.C.	AmoParService	Roomount	Smart Wireless Gate...	5	HART	X	
FAM GW1	23	2/23/2018 15:20:26	Normal	Open/Unsecure	Rig Unit Equip.C.	AmoParService	Roomount	Smart Wireless Gate...	5	HART	X	
FAM GW1	3	2/23/2018 15:20:26	Normal	Networks Res...	Rig Unit Equip.C.	AmoParService	Roomount	Smart Wireless Gate...	5	HART	X	
FAM GW1	16	2/23/2018 15:20:26	Normal	Address Res. M...	Rig Unit Equip.C.	AmoParService	Roomount	Smart Wireless Gate...	5	HART	X	
TT323W	1	3/5/2018 12:58:41	Info Communication		Rig Unit Equip.C.	AmoParService	Roomount	646 Wireless Tempe...	1	HART		
FC-105	1	5/11/2018 10:16:52	Warning	Performance Dia...	Rig Unit Equip.C.	FAM DEMO RIG	Fisher Control Inter...	DVC520 HW2	1	HART		
FC-105	1	5/11/2018 10:16:53	Warning	Performance Dia...	Rig Unit Equip.C.	FAM DEMO RIG	Fisher Control Inter...	DVC520 HW2	1	HART		
FC-105	1	5/11/2018 10:17:13	Warning	Performance Dia...	Rig Unit Equip.C.	FAM DEMO RIG	Fisher Control Inter...	DVC520 HW2	1	HART		
FC-105	1	5/11/2018 10:18:33	Warning	Performance Dia...	Rig Unit Equip.C.	FAM DEMO RIG	Fisher Control Inter...	DVC520 HW2	1	HART		
PT 622	6	5/23/2018 12:34:16	Warning	Temperature Alert	Rig Unit Equip.C.	FAM DEMO RIG	Roomount	3551	6	HART	X	
PT 624	4	5/23/2018 12:34:16	Warning	Transmit Deviat...	Rig Unit Equip.C.	FAM DEMO RIG	Fisher Control Inter...	DVC520 HW2	1	HART		
FC-105	4	5/23/2018 12:34:16	Warning	Supply Pressure	Rig Unit Equip.C.	FAM DEMO RIG	Fisher Control Inter...	DVC520 HW2	1	HART		
PT 765	16	5/23/2018 12:34:16	Warning	Temperature Alert	Rig Unit Equip.C.	FAM DEMO RIG	Roomount	3551	7	HART	X	
TT491	12	5/23/2018 12:34:16	Warning	Valve Backup Active	Rig Unit Equip.C.	FAM DEMO RIG	Roomount	2144	8	HART	X	
PT 763	16	5/23/2018 12:34:16	Warning	Temperature Alert	Rig Unit Equip.C.	FAM DEMO RIG	Roomount	3551	7	HART	X	
PT 762	16	5/23/2018 12:34:16	Warning	Temperature Alert	Rig Unit Equip.C.	FAM DEMO RIG	Roomount	3551	7	HART	X	
PT 701	16	5/23/2018 12:34:16	Warning	Pressure Alert	Rig Unit Equip.C.	FAM DEMO RIG	Roomount	3551	7	HART	X	
PT 701	16	5/23/2018 12:34:16	Warning	Temperature Alert	Rig Unit Equip.C.	FAM DEMO RIG	Roomount	3551	7	HART	X	
PT 684	16	5/23/2018 12:34:16	Warning	Temperature Alert	Rig Unit Equip.C.	FAM DEMO RIG	Roomount	3551	6	HART	X	
PT 704	16	5/23/2018 12:35:01	Warning	Temperature Alert	Rig Unit Equip.C.	FAM DEMO RIG	Roomount	3551	7	HART	X	

The Alert Monitor provides alert notification and status information so you can prevent process upsets.

## AMS Device Manager Core Capabilities

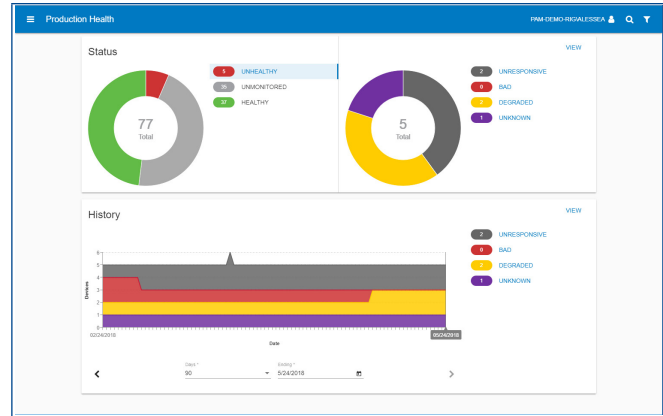
### Advanced Diagnostics

Quickly check the health of any connected wired or wireless device by viewing its status using the diagnostics and monitoring capabilities in AMS Device Manager. With broad asset coverage, AMS Device Manager provides predictive diagnostics to deliver a more comprehensive account of the health of your field devices.

In addition, a powerful, proactive method of diagnosing potential device problems is provided by the Alert Monitor. AMS Device Manager includes DDs with optimized alerts to minimize repetitive nuisance device alerts that risk flooding Alert Monitor. Users may choose to apply these default alert settings or modify them based on their needs. The Alert Monitor summary screen provides an overview of all device alerts, regardless of protocol, and gives you the ability to access additional device information for more details.

Alert latching allows you to identify new alerts and keep track of existing ones. Alerts can also be easily filtered so you can quickly see the information you need.

AMS Device Manager enables you to perform device self-tests and loop tests, and automatically documents the results. When your intelligent devices are online with AMS Device Manager, you will know of problems occurring as they happen, not when they have already affected your process and the quality of your product.



Extend your asset management program with mobile-friendly device health dashboards.

### Data Server

AMS Device Managers Data Server enables an organization's ability to capitalize on existing software and technology footprint, more confidently pursue higher return on investment and democratize data. AMS Device Managers Data Server employs continuous, automated collection of data pertaining to your plant's critical field devices for enhanced predictive diagnostics. By leveraging it, users can replicate their AMS Device Manager data outside the process control network – securely extending this data into both Emerson and third-party destinations like plant historians, control systems, data lakes, visualization and dashboard applications, advanced analytics.

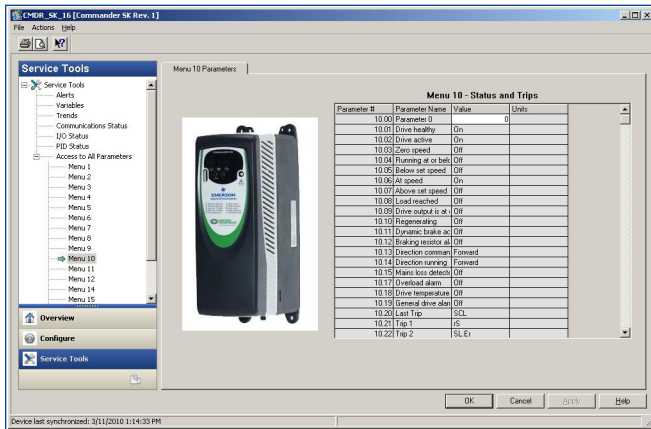
Simplify maintenance of control valves connected to Fisher DVCs by providing a dashboard to easily view the status of valves around a facility and recommended time frame to take corrective action on emerging issues.

AMS Device Manager Data Server provides necessary valve data to enable the Plantweb Insight Valve Health app. This simplifies and expedites evaluation of the overall status of the valve fleet, allowing non-specialists in control valves to understand fleet health and prioritize repairs based on easy-to-understand, actionable information.

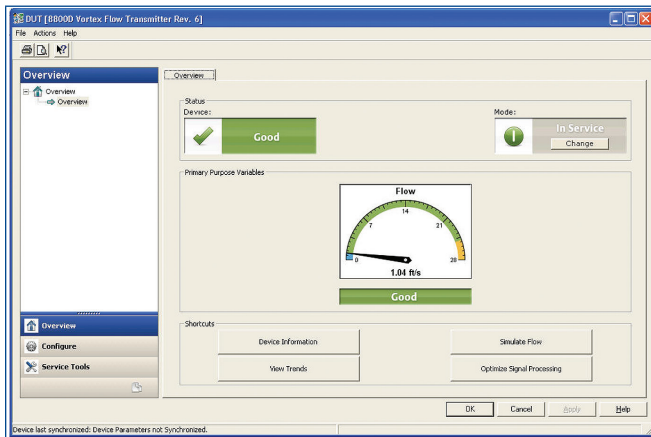
### Device Health Overview

Imagine knowing everyday at a glance how your instrument maintenance program is doing. Are there hidden problems in your instruments that could cause a shutdown? Are you relying on instruments that are overdue for calibration? Are your commissioning, shutdown, outage, and turnaround projects on track for completion?

AMS Device View extends your AMS Device Manager system by delivering device health, calibration status, and project information through a browser-based interface. With AMS Device View, you can quickly see which devices need maintenance and can view recommended actions – from any place that there is a browser connection. Through intuitive dashboards and focused alerts, technicians can quickly access the data needed to respond quickly. And when additional work is needed, AMS Device View can launch the full AMS Device Manager system.



Even for a complex device, asset information is organized and easily accessed.



View process variables, monitor device status, and detect alert events within any device connected to your host system.

## Streamline Configuration

AMS Device Manager makes configuration of devices simple, easy, and user-friendly. Using configuration management you can change, store, compare, and transfer device configurations. *WirelessHART*® devices can be easily configured using the drag and drop provisioning capability. Simply connect the wireless device via a HART® modem and then drag and drop it onto the wireless gateway. The network ID and join key are automatically written to the device.

With FOUNDATION™ Fieldbus devices, commissioning and replacing devices can be done quickly and easily without the need for user interaction with the software, getting you up and running sooner and more efficiently.

Configuration information is read from any device, allowing you to make multiple changes simultaneously, compare configurations of like devices, or historical configurations on the same device. Setting up a new device configuration is as easy as a couple of clicks. Simply transfer the existing database configuration into the new device and you are up and running. Digital valve controllers, flow devices, multivariable transmitters, and wireless devices are configured quickly and easily with AMS Device Manager.

Device configuration can also be done via DTM through the DTM Launcher Application. If your devices require the use of DTMs for advanced configuration or diagnostics, AMS Device Manager can handle both DDs and DTMs.

## Faster Commissioning with Configuration Templates

Before commissioning field devices, you can create templates to make the process more efficient. Define parameters for multiple devices and set configurations to follow a pre-defined standard. Templates can also be used to assign plant location, alert monitor group, HART tag, descriptor, message, ranges, and units. By using templates to configure devices in bulk, commissioning can be completed in a fraction of the time that is required with traditional methods. Typical savings range from 80-90% less time required — with fewer configuration errors.

## Simplify Documentation

AMS Device Manager saves time and money by automating documentation around device tasks. For instance, when you make a configuration change to a device, the Audit Trail will capture when the change was made and who made it. In addition, manual entries can be created to document events not automatically captured, such as a lightning strike at the plant.

Each device is also provided with a Drawings and Notes field, used to create dynamic links to your custom documents and websites. User manuals, installation guides, P&IDs, and technical contact information can be kept right at your fingertips where you need it, not in a filing cabinet in another location.

Additional documentation capabilities include the ability to create reports, perform database searches, and export data into a different format.

## Efficient Calibration Management

AMS Device Manager supports the definition of device test schemes, device calibration scheduling, and the management of device calibration data. Test schemes are defined by the calibration interval, test point and accuracy requirements, and set-up and clean-up instructions. Design calibration test schemes for individual devices or groups of instruments. Then, drag and drop the transmitter icons onto your test scheme to assign devices.

There are calibration solutions for every level of need – from getting started with calibration to advanced use that requires compliance with regulations like 21 CFR Part 11.

## Maintain Accurate Data

AMS Trex uses Auto Sync technology to maintain the data integrity of your AMS Device Manager database — without any technician intervention. Every change made in the field is automatically recorded and time-stamped.

Changes are updated in real-time if WiFi connection is enabled and a technician is in a hot spot. Or changes are cached on the Trex communicator and applied to the database when the communicator detects a WiFi signal or USB cable connection.

The Trex communicator logs and timestamps changes as they occur, delivering an accurate audit trail of device changes in AMS Device Manager.

## Improve Device Security with Lock/Unlock Ability

AMS Device Manager allows you to lock devices using system-based write protection. Choose how to apply, including to all devices, critical devices, SIS devices, by location, and more. If you need to make changes to devices, they can be unlocked for a set time and then automatically locked again for added security. Set permissions by user or user group.

## Online or Offline

### Online

Using AMS Device Manager online enables access to the full power of your intelligent field devices. You can remotely view the process variables, monitor device status, detect alert events, and configure any device connected to your host system, including DeltaV™. Interfaces are also available to help you easily integrate with new technology and equipment from other vendors. Interface options include:

- DeltaV
- HART Multiplexer
- Wireless
- ABB
- Kongsberg
- PACSystems PAC8000
- HART-IP (Tricon CX, HIMax, Honeywell OneWireless, Phoenix Contact HART Multiplexer, smartLink HW-DP, FB3000, Open Enterprise, Schneider M580, ControlLogix, R. Stahl IS1+, Smart Embedded Systems Multiplexer, Doosan Controller)

Other third party solutions provide specific I/O cards for some PLC and DCS systems to emulate a HART multiplexer.

### Offline

Working offline means you have access to the historical device information in the plant database, and can communicate to one device at a time using a HART modem. Device configuration and troubleshooting can be performed offline in the shop or at a termination panel.

## SNAP-ON™ Applications

AMS Device Manager SNAP-ON applications are recommended to gain enhanced information and diagnostic functionality for a device or group of devices. SNAP-ON applications available with AMS Device Manager include:

- AlertTrack™
- AMS Wireless
- Calibration Assistant
- DCMLink™
- Flow Serve Valve Analysis
- Masoneilan Valvue
- Meter Verification
- MV Engineering Assistant
- QuickCheck™
- ValveLink SNAP-ON to AMS Device Manager

## Product Support

Get off to a strong start with your technology investment. AMS Device Manager product support is delivered through Guardian™. Emerson experts can help you use the diagnostics from your smart devices to full advantage. Our experts will install the application and complete your initial configurations. Emerson can help you implement re-engineered maintenance tasks to optimize your use of AMS Device Manager. Integrate data with your enterprise asset management system to enable measurement of improvement to your facility's bottom line.

## Options

To enhance your AMS Device Manager application; the following options may be added:

- **Client SC (Thick client).** A licensable option to remotely access the AMS Device Manager database on the Server Plus Station. This license allows access to all devices and is compatible with all Online Interface types.
- **Device View (Thin client).** A licensable option that lets customers track device status through a browser-based interface. Users can view device health and calibration status and monitor device health through mobile-friendly dashboards.

- **Online Interfaces.** Choose from a variety of Online Interface Type options. Refer to **AMS Device Manager Online Interfaces and Optional Features Product Data Sheet** for the list of Online Interface Type product options.
- **Audit Trail.** A licensable option to store and display historical records of device configuration changes and performance.
- **Data Server.** A licensable option that enables integration of AMS Device Manager Data with other data sources for advanced analytics and machine learning applications. It can also perform continuous, automated collection of significant field device information and support a centralized management program with a secure infrastructure.
- **AMS SNAP-ON Product Options.** Choose from a variety of AMS SNAP-ON application options. Refer to **AMS Device Manager SNAP-ON applications Product Data Sheet** for the list of AMS Snap-On product options
- **Calibration Management.** A default feature of AMS DM and does not require a license. The customer can create test schemes and track the test equipment that are used to test which devices. The customer can also set the calibration schedule of each device and locate devices that are due for calibration.
- **Field Communicator Interface Kit.** A licensable option allowing AMS Trex Device Communicator to automatically synchronize (AutoSync) with AMS Device Manager. With Auto Sync, the Trex communicator instantly delivers visibility of all field changes thereby improving response time to operational changes.
- **AMS Trex.** A powerful and portable diagnostic tool to properly diagnose device issues in the field. When AMS Trex data is automatically synchronized with AMS Device Manager, field changes are delivered instantly thereby improving response time to operational changes.
- **AMS Device Manager Data Collector.** Helps to connect existing AMS Device Manager installations to AMS Optics and allows AMS Device Manager users to monitor device health from anywhere.

- **AMS Optics.** Provides a modern OT data connectivity, data management, and data repository solution built to accelerate your digital transformation programs. It can combine data from multiple applications, like AMS Device Manager, into asset-centric information to deliver persona-based alerts and KPIs for improving the reliability of assets throughout the facility.
- **DeltaV System.** An easy-to-use, future-proof automation system designed to increase plant performance, adapt to meet your needs, and lower project risk and cost. AMS Device Manager and DeltaV control system work together to deliver a seamless user interface in an integrated operating environment.
- **Ovation System.** A system that is purposely designed for the power generation and water/wastewater industries. AMS Device Manager interfaces with the Ovation system to provide additional diagnostic and monitoring capabilities.
- **Smart Wireless Gateway.** Connects WirelessHART networks with host systems and data applications. It lets the user configure the gateway and its corresponding devices using a web browser. When used with AMS Device Manager, you get a cost-effective solution for remote configuration and diagnostics.

## Ordering Information

Description	Part Number
AMS Device Manager Application; Server Plus Station	AW7001SPxxxxx; where xxxxx refers to the number of tags to be used in the AMS Device Manager system
Client SC Station License	AW7003CSC
Device View User License	AW7003DV1

©2025, Emerson. All rights reserved.

The Emerson logo is a trademark and service mark of Emerson Electric Co. The AMS logo is a mark of one of the Emerson family of companies. All other marks are the property of their respective owners.

The contents of this publication are presented for informational purposes only, and while diligent efforts were made to ensure their accuracy, they are not to be construed as warranties or guarantees, express or implied, regarding the products or services described herein or their use or applicability. All sales are governed by our terms and conditions, which are available on request. We reserve the right to modify or improve the designs or specifications of our products at any time without notice.

**Contact Us**

🌐 [www.emerson.com/contactus](http://www.emerson.com/contactus)