

Fisher™ Airset technology unsurpassed



FISHER™ 67D Series Pressure Reducing Regulators

The Fisher 67D Series

The 67D Series delivers reliable and accurate operation in a wide variety of applications. Emerson manufactures an assortment of regulators to meet the most demanding flow and operating environments.

Product Advantages

- Reduced operating costs with no bleed internal relief
- Accurate pressure regulation even with varying inlet pressures
- Compact design and easy in-line maintenance
- Dual Second Outlets for pressure gauge and other uses
- Corrosion Resistant Fasteners

Product Options

- Smart Bleed™ Internal check Valve (Types 67DFR and 67DFSR)
- No Bleed Internal Relief
- Integral Filter Construction (5 micron standard, 40 micron option)
- Automatic Drain
- NACE MR0175 or MR0103 Construction



Type 67D or 67DR



Type 67DF or 67DFR

67D Series Features

- **Body Size:** 1/2 NPT
- **Maximum Inlet Pressure:**
All filtered models: 250 psig / 17.2 bar
All unfiltered models: 400 psig / 27.6 bar
- **Outlet Pressure Ranges:**
Aluminum Constructions: 0 to 125 psig / 0 to 8.6 bar
Stainless Steel Constructions: 0 to 150 psig / 0 to 10.3 bar
- **Temperature Capabilities:** -60 to 300°F / -51 to 149°C
- **Pressure Registration:** Internal
- **Body Material:** Aluminum or 316/316L stainless steel
- **Overpressure Protection:** Internal relief



Complete air solution to fit your needs

Emerson offers a complete line of air solutions including a full line of instrument air regulators, high capacity regulators, high pressure regulators, volume boosters, two-way and three-way switching valves and overpressure protection.

Pressure Reducing



67C Series

- **Body and End Connection Size:** 1/4 NPT
- **Outlet Pressure Range:** 0 to 150 psig / 0 to 10.3 bar
- **Maximum Inlet Pressure:** 400 psig / 27.6 bar
- **Operation Method:** Direct-Operated
- **Body Material:** Aluminum and Stainless Steel
- **Bulletin No.:** 71.1:67C



1301 Series

- **Body and End Connection Size:** 1/4 NPT
- **Outlet Pressure Range:** 10 to 500 psig / 0.69 to 34.5 bar
- **Maximum Inlet Pressure:** 6000 psig / 414 bar
- **Operation Method:** Direct-Operated
- **Body Material:** Brass and Stainless Steel
- **Bulletin No.:** 71.1:1301



MR95 Series

- **Body Size:** NPS 1/4, 1/2, 3/4, 1, 1-1/2 and 2 / DN 8, 15, 20, 25, 40 and 50
- **Outlet Pressure Range:** 2 to 400 psig / 0.14 to 27.6 bar
- **Maximum Inlet Pressure:** 1000 psig / 68.9 bar
- **Operation Method:** Direct-Operated
- **Body Material:** Cast Iron, Steel, Stainless Steel, Hastelloy® C, Monel® and LCC steel
- **Bulletin No.:** 71.1:95

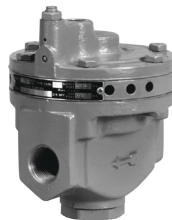
Relief Valves



Type H800

- **Body and End Connection Size:** 1/4 NPT
- **Fixed Relief Pressure Range:** 39 to 44 psig / 2.7 to 3.0 bar
- **Maximum Inlet (Relief) Pressure:** 250 psig / 17.2 bar
- **Operation Method:** Direct-Operated
- **Body Material:** Aluminum
- **Bulletin No.:** 71.4:H800

Volume Boosters



2625 Series

- **Body and End Connection Size:** 3/4 NPT
- **Maximum Inlet Pressure:** 150 psig / 10.3 bar
- **Operation Method:** Direct-Operated
- **Body Material:** Aluminum or Stainless Steel
- **Bulletin No.:** 62.3:2625

Switching Valves



167D Series Two-Way Switching Valve

- **Body and End Connection Size:** 1/4 or 1/2 NPT
- **Outlet Pressure Range:** 3 to 150 psig / 0.21 to 10.3 bar
- **Maximum Inlet Pressure:** 400 psig / 27.6 bar
- **Operation Method:** Direct-Operated
- **Body Material:** Aluminum or Stainless Steel
- **Bulletin No.:** 71.7:167D



167DA Series Three-Way Switching Valve

- **Body and End Connection Size:** 1/4 or 1/2 NPT
- **Outlet Pressure Range:** 14 to 125 psig / 0.97 to 8.6 bar
- **Maximum Inlet Pressure:** 125 psig / 8.6 bar
- **Operation Method:** Direct-Operated
- **Body Material:** Aluminum or Stainless Steel
- **Bulletin No.:** 71.7:167D



Type 119

- **Body and End Connection Size:** 3/4, 1 or 1-1/4 NPT
- **Outlet Pressure Range:** 3 to 60 psig / 0.21 to 4.1 bar
- **Maximum Inlet Pressure:** 150 psig / 10.3 bar
- **Operation Method:** Direct-Operated
- **Body Material:** Cast Iron and Steel
- **Bulletin No.:** 71.1:119

Hastelloy® C is a mark owned by Haynes International, Inc.
Monel® is a mark owned by Special Metals Corporation

Emerson Automation Solutions

Americas

T +1 800 558 5853
T +1 972 548 3574

Europe

T +39 051 419 0611

Asia Pacific

T +65 6777 8211

Middle East / Africa

T +971 4811 8100

✉ webadmin.regulators@emerson.com

🔍 Fisher.com

📘 Facebook.com/EmersonAutomationSolutions

🌐 LinkedIn.com/company/emerson-automation-solutions

🐦 Twitter.com/emr_automation